

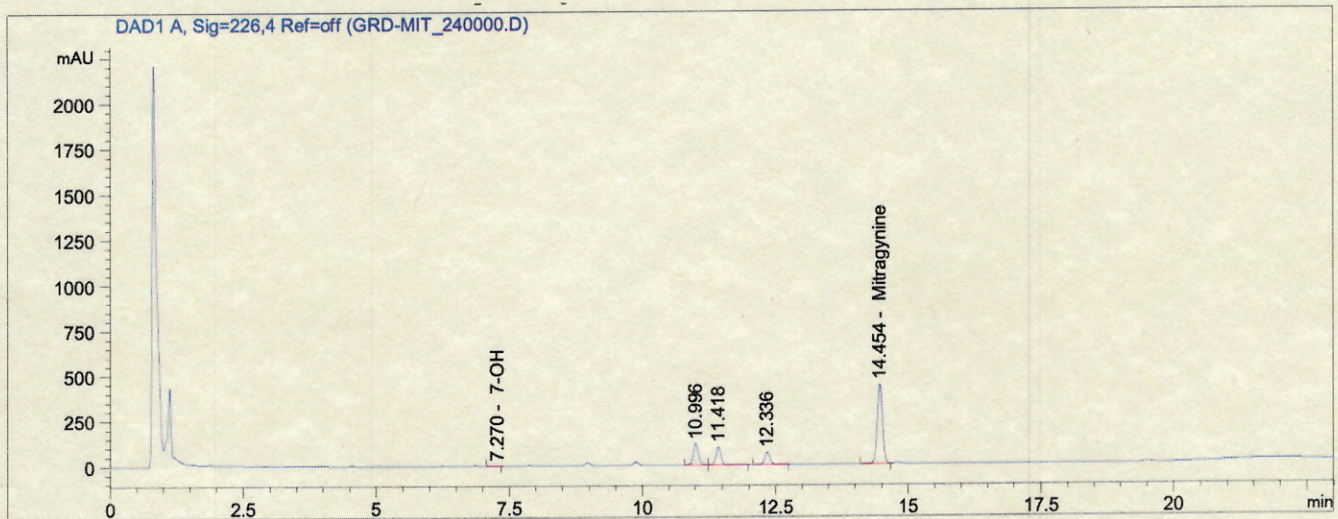
Wonderland Labs

Certificate of Analysis

03 FEBRUARY 2023

DARK RED / MITRAGYNINE / 97 23.01.02AX 4.18

Client:	KREAT DAY	Prepped By:	Keith C.
Sample Type:	Powdered	Date Acquired:	01/31/2023
Sample Weight:	200mg	Acquisition Method:	MIT-EVO_R2022-01
Dilution:	1.0	Testing ID:	GRD-MIT_240000.D
Vial:	Vial 32	Date Processed:	01/31/2023
Injection Volume:	5.0 µl	Run Time:	27 min
SAMPLE SET:	144800	Calibration ID:	20230105



#	Analyte	RT (min)	Area (mAU*s)	Amt (µg/mL)	Alkaloid	Total %
1	Mitragynine	14	2644.50	155.48	C ₂₃ H ₃₀ N ₂ O ₄	1.55
2	7-Hydroxymitragynine	7	3.86	1.00	C ₂₃ H ₃₀ N ₂ O ₅	0.01
3	Paynantheine	10	785.6	36.88	C ₂₃ H ₂₈ N ₂ O ₄	0.4
4	Speciogynine	11	620.5	29.13	C ₂₃ H ₃₀ N ₂ O ₄	0.3
5	Speciociliatine	12	450.1	21.13	C ₂₃ H ₃₀ N ₂ O ₄	0.2
6						

Mitragynine Content: **1.6%**
ONE PERIOD SIX PERCENT

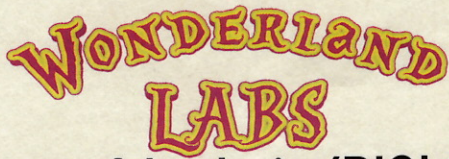
Adulterants (Y/N): **None Detected**

Identity Confirmed: **YES**

SEAL OF AUTHENTICITY

VERIFIED BY: *[Signature]*

Quality Assurance: *[Signature]*



Certificate of Analysis (BIOLOGICAL)

15 FEBRUARY 2023

KREAT DAY BOTANICALS

Total Aerobics, Yeast & Mold, Coliforms, E. coli, Salmonella, & Staphylococcus

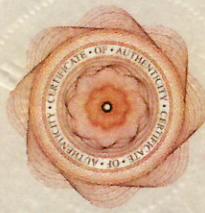
Sample	Lot #	USP NF Total Viable Count		USP NF Total Yeast		USP NF Total Mold	
		Spec*	Result*	Spec	Result	Spec	Result
Super Green	23.01.01.AX / 19.7	<50k CFU/g	6.8K CFU/g	<1k CFU/g	300 CFU/g	<10k CFU/g	300 CFU/g
Dark Red	23.01.02AX / 4.18	<50k CFU/g	19.8K CFU/g	<1k CFU/g	400 CFU/g	<10k CFU/g	400 CFU/g

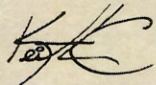
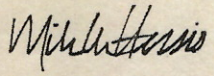
Sample	Lot #	FDA(BAM)CH.4 Coliforms 3 tube MPN		USP NF E. Coli POS/NEG		USP NF Salmonella ELFA		USP NF Staphylococcus Aureus	
		Spec	Result	Spec	Result	Spec	Result	Spec	Result
Super Green	23.01.01.AX / 19.7	<10k CFU/g	1K CFU/g	POS/NEG	NEG	POS/NEG	NEG	POS/NEG	NEG
Dark Red	23.01.02AX / 4.18	<10k CFU/g	1K CFU/g	POS/NEG	NEG	POS/NEG	NEG	POS/NEG	NEG

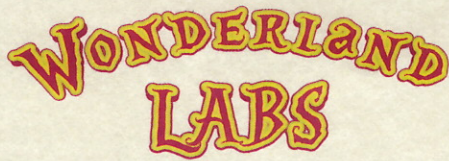
* Results are in CFU/g. The detection level for testing Yeast, Mold, and Salmonella is <10 CFU/g. FDA BAM detection level for Coliforms and E.Coli is <3 CFU/g.

Typical Aerobic Plate Count Range for Mitragyna speciosa is 50,000 CFU/g.

Sample Set: 144800
 Test Date: 02/12/23
 Bio Final: PASS



SEAL OF AUTHENTICITY
 VERIFIED BY: 
 Quality Assurance: 



Certificate of Analysis (Heavy Metals)

06 FEBRUARY 2023

KREAT DAY BOTANICALS LLC

Product #	Lot #	Metals	Spec	Results
Dark Red	23.01.02AX/4.18	Arsenic	< 10,000 ppb	< 100 ppb
		Cadmium	< 4,100 ppb	N/D
		Lead	< 900 ppb**	N/D
		Mercury*	< 300 ppb	N/D

* Methyl mercury is included in total Mercury. Method AOAC 993.14 is equivalent to method ICP-MS USP <730>.

** California's Proposition 65 set up overly restrictive limits for many natural plant materials in relation to lead. There are many plants that have higher levels of lead than is acceptable in the State of California. If your CA result comes back as a "HI-LEAD", you may be required to place notices on your material, or it may be a material that cannot technically be sold for consumption in the state of California.

United States Pharmacopeia (USP) Limit for Nutritional Supplements:

- Arsenic 3.000 ppm / 3000.000 ppb
- Cadmium 3.000 ppm / 3000.000 ppb
- Lead 10.000 ppm / 10000.000 ppb
- Mercury 3.000 ppm / 3000.000 ppb

California Proposition 65 Daily Limits for Heavy Metals:

- Arsenic 10 ppm / 10,000.000 ppb
- Cadmium 4.1 ppm / 4,1000.000 ppb
- Lead 0.5 ppm / 500.000 ppb
- Methyl Mercury 0.3 ppm / 300.000 ppb

For labels with a single daily dose of 500mg, the PPM in products cannot be higher than:

- Arsenic = 20.000 ppm / 20,000.000 ppb
- Cadmium = 8.000 ppm / 8,000.000 ppb
- Lead = 0.900 ppm / 900.000 ppb
- Mercury = 0.600 ppm / 600.000 ppb


FDA Tolerable Daily Diet Lead intake:

- Children <6 years old = 6.000 ppm / 6000.000 ppb
- Pregnant women = 25.000 ppm / 25000.000 ppb
- Adults = 75.000 ppm / 75000.000 ppb

Sample Set: 144800

Heavy Metals (USA): PASS

Heavy Metals (CA): PASS



SEAL OF AUTHENTICITY

VERIFIED BY: *[Signature]*

Quality Assurance: *[Signature]*